

GRIDLEY FFA

Learning to Do, Doing to Learn,
Earning to Live, Living to Serve

Table of Content

Why Join FFA	4
Course Catalog	5
Pathway Course Map	7
Chapter Activities	8
FFA CREED	9
FFA Motto	10
Colors	10
FFA Emblem	11
Program Completers	12
Official Dress	13
Fair Uniform	13
FFA Jacket Pins	14
Degree Ladder	14
Proficiency Areas	15
FFA Participation	16
Eligibility for FFA Membership	16
Chapter Communication	17
Conferences & Conventions	18
California State Officers	21
Superior Region Officer Team	21
Chapter Officers	22
FFA Statistics	23
Officer Responsibilities	24
Parliamentary Procedures	27

Career Development Event (CDE) Teams and Contests	29
Program of Activities	32
Gridley FFA Constitution	34
Gridley FFA By-Laws	38
Point Awards System	42
FFA & Ag Related Scholarships	47

Why Join FFA

FFA is a dynamic youth organization that changes lives and prepares members for premier leadership, personal growth and career success through agricultural education.

FFA develops members' potential and helps them discover their talent through hands-on experiences, which give members the tools to achieve real-world success.

Members are future chemists, veterinarians, government officials, entrepreneurs, bankers, international business leaders, teachers and premier professionals in many career fields.

Be a part of the largest student organization in the world.

Apply for more than \$2 million in scholarships.

Meet new friends from across the country.

Learn skills that will help you in your future career.

Compete on leadership and judging teams.

Do your part in helping to provide food and fiber to the world.

Course Catalog

Students who plan on participating in both the Butte County Fair and the Chico Fair must be enrolled in an Agriculture class and have up to date records in their record book.

Introduction to Ag Manufacturing: (Grade 9-10) (1 Year) (OSHA Safety and Forklift Certifications)

Prerequisite: None

This is an introductory course into the Welding and manufacturing industry. Students will learn safe operation of tooling while working on small projects in the wood and metal industries. Students will learn OSHA standards for California and upon successful completion of the course be awarded a certification from CAL OSHA. Students will be using tooling used for cutting and shaping various media. Computer aided drafting will be learned and utilized for most of your projects. Students have the opportunity to participate in FFA (Future Farmers of America) activities and competitions.

Introduction to Ag Mechanics: (Grade 9-11) (1 Year) (Flat and Horizontal Welding Certifications) (2+2 BC) (CSU/UC "g" elective)

Prerequisites: Introduction to Manufacturing

Articulated for College Credit at Butte College this course will focus on entry level flat and horizontal welding. D1.1 welding code will be addressed and students can Earn their Certification in Flat Plate. Weld testing fundamentals and principles will be covered in this course. Basic Cutting with oxyfuel and alternative fuels will be addressed in this class. Successful completion of this course will earn you 3 college units and a American Welding Society Certification for structural steel. Students have the opportunity to participate in FFA (Future Farmers of America) activities and competitions.

Intermediate Ag Mechanics: (Grade 10-12) (1 Year) (I-CAR Certification) (2+2 BC) (CSU/UC "d" lab science)

Prerequisites: Introduction to Manufacturing and Ag Welding 1

This course is articulated with Butte College and upon successful completion will provide 3 college units and an I-CAR certification for sheet metal. This course picks up where Ag. Welding 1 leaves off and focuses on Vertical and overhead welding. This course is designed for serious students about the welding profession. Students have the opportunity to participate in FFA (Future Farmers of America) activities and competitions.

Advanced Ag Mechanics & Design: (Grade 11-12) (1 Year) (2+2 BC) (CTE Pathway Capstone) (CSU/UC "f" Visual & Performing Art)

Prerequisites: Introduction to Manufacturing, Introduction to Ag Mechanics and Intermediate Ag Mechanics

Articulated for college credit at Butte College. This class provides students with entry-level training in Computer Aided Design/CAD, Computer Aided Manufacturing/CAM technologies employing plasma arc, and welding/fabrication equipment. Skill areas include light construction, welding, sheet metal work, heat treating/hardfacing, hydraulics and basic mechanics. Internships with local manufacturers offer students on-the-job learning experiences. Students have the opportunity to participate in FFA (Future Farmers of America) activities and competitions.

Beginning Floral Design: (Grade 9-10) (1 Year) (CSU/UC "f" Visual & Performing Art)

Prerequisite: None

The Art of Floral Design provides an introduction to artistic and creative perception including aesthetic valuing through a series of projects in various media including tempera, pencil, flowers, tile, and a variety of papers. Students are also introduced to the elements and principles of visual art design such as line, shape/form, color, balance, and emphasis using a series of floral-based projects to explore the connections, relations, and application to visual arts design.

Advanced Floral Design: (Grade 10-12) (1 Year) (Certifications) (CSU/UC "g" elective) (CTE Pathway Capstone)

Prerequisite: Introduction to Floral Design

Recommended: Sustainable Ag Biology and Agriculture Soil and Chemistry

Horticulture: (Grade 10-12) (1 Year) (Certifications) (CSU/UC "g" elective) (Dual Enrollment: Butte College)

Prerequisite: Introduction to Floral Design and Ornamental Horticulture

Recommended: Sustainable Ag Biology and Agriculture Soil and Chemistry

Ornamental Horticulture is designed to give students skills in the areas of nursery management, landscaping, plant reproduction, plant physiology, pest management and plant identification. Class activities will include greenhouse production in the fall and spring. Leadership development, business management, and employability skills will be included.

Introduction to Ag and Animal Science: (Grade 9-10) (1 Year) (Certifications) (CSU/UC “d” lab science) (2+2 BC)

This course is a scientific approach to the agricultural sciences and livestock industry encompassing aspects of FFA, SAE (Supervised Agricultural Experience Programs), CDE (Career Development Events), global agriculture, California agriculture, animal anatomy, physiology, nutrition, genetics, epidemiology and record keeping. There will be special emphasis on the origin, characteristics, adaptation and contributions of farm animals to the global agriculture industry. Analysis of the economic trends and career opportunities in animal agriculture will be covered.

Intermediate Animal Science: (Grade 10-12) (1 Year) (CSU/UC “d” lab science) (Dual Enrollment: Butte College)

Prerequisite: Introduction to Ag and Animal Science

Recommended: Sustainable Ag Biology and Agriculture Soil and Chemistry

This course demonstrates the application of animal anatomy, physiology and behavior in animal production. Knowledge of the interrelationships of body systems, nutrition, reproduction, environment and management will be stressed. Extensive use of dissection, field study in nutrition and reproduction and animal health are required. Safe and secure animal handling, confinement, transportation and bio-security will be emphasized. Students will be expected to participate fully in a variety of live and preserved specimen experiments, off campus travel is a part of the course. Out of school participation in animal science production activities will be actively encouraged.

Advanced Animal Science: (Grade 11-12) (1 Year) (Certifications) (CSU/UC “d” lab science) (CTE Pathway Capstone)

Prerequisite: Intermediate Animal Science

Recommended: Sustainable Ag Biology and Agriculture Soil and Chemistry

The Advance Animal Science course is designed to provide students with an opportunity to investigate different aspects of the animal health and care occupations, or to continue on in post-secondary education in the animal science field. This content of this course will include: job-search skills, comparative anatomy and physiology, animal reproduction, animal inheritance and selection principles, basic pet grooming skills, animal restraint, nutrition and housing, medical terminology, animal welfare concerns, production practices for large and small animals, production of small animals, how animal products and by-products are processed and marketed, species and breed identification, and disease control/management. This course will also combine fundamentals of academics to include communications, career planning and management, technology, problem solving and critical thinking, health and safety practices, ethics as well as legal responsibilities, leadership development and teamwork through active participation in the FFA, personal responsibility and flexibility as it applies to specific job skills.

Sustainable Agriculture Biology (Grade 9-10) (1 year) (10 credits) (CSU/UC “d” lab science) See course description under Science

Sustainable Agriculture Biology is a one year course designed to integrate biological science practices and knowledge into the practice of sustainable agriculture. The course is organized into four major sections, or units, each with a guiding question. Within each unit specific life science principles will be identified with agricultural principles and practices guiding the acquisition of this knowledge, culminating in the development of a sustainable farm model and portfolio of supporting student research.

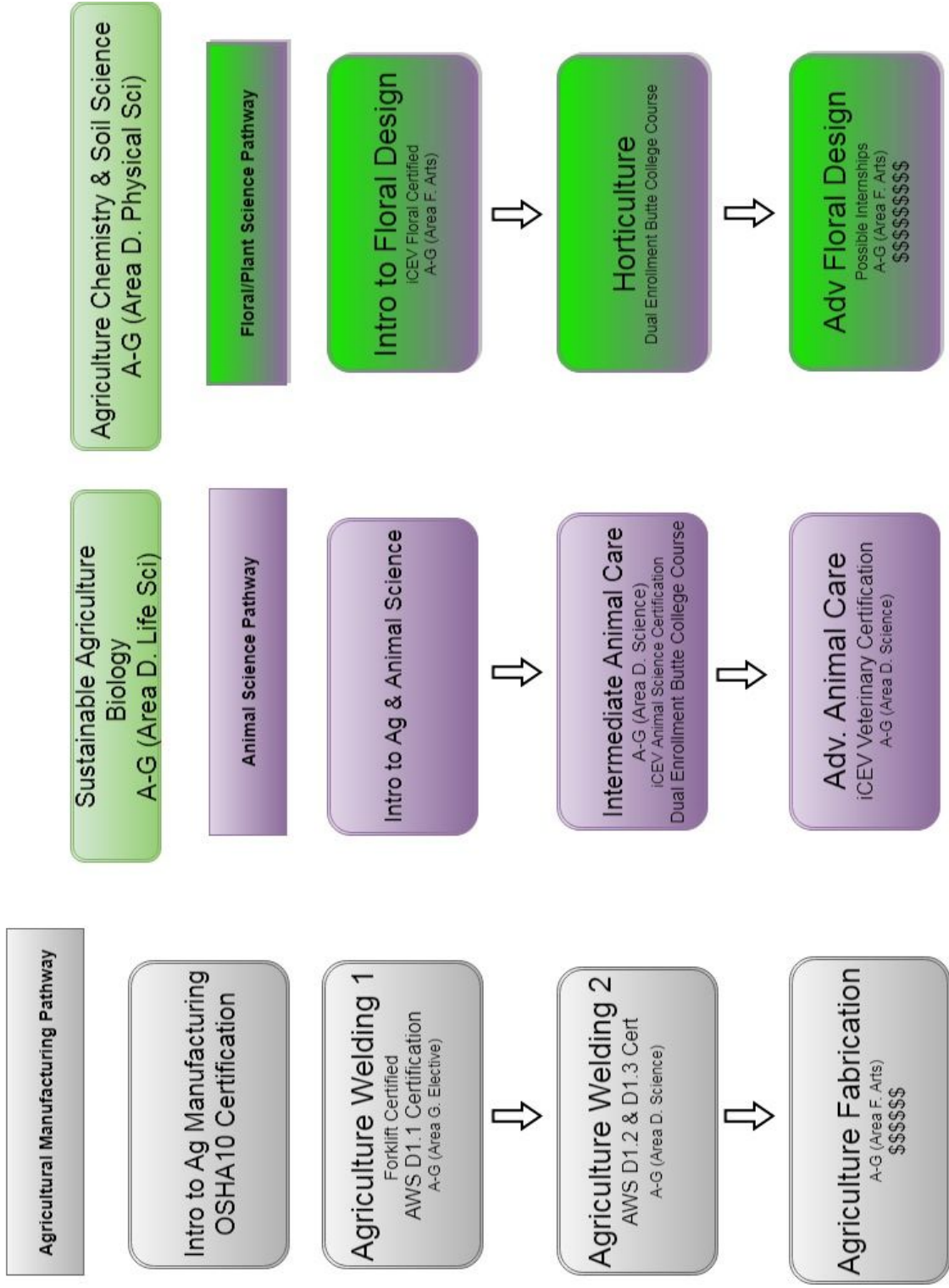
Agriculture Soil and Chemistry Science (Grade 10-11) (10 Credits) (CSU/UC “d” lab science)

Prerequisite: Ag Biology, Integrated Math 1 and Geometry or Integrated Math 2

This course explores the physical and chemical nature of soil as well as the relationships between soil, plants, animals and agricultural practices. Students will examine properties of soil and land and their connections to plant and animal production. Using knowledge of scientific protocols as well as course content, students will develop an Agriscience research program to be conducted throughout the first semester of the course.

Pathway Course Map

Agriculture Department Pathways Diagram



Chapter Activities

Chapter Meetings

September 10
October 22
November 26
December 10
January 28
February 25
March 25
April 22

Banquets

Spring Banquet- May 14

FUNDRAISERS

Drive Thru BBQ- Nov. 7
Ribs Feed- March 16
Plant Sale- April 6

Floral of the Month Club
Sign Up's in September

Chapter Activities

September 12
October 10
December 5
January 16
February 20
March 13
April 10

Agriculture Classes require students to attend TWO events/quarter

Can NOT miss more than TWO chapter meetings to be eligible to show at fair

FFA CREED

I believe in the future of agriculture, with a faith born not of words but of deeds achievements won by the present and past generations of agriculturists; in the promise of better days through better ways, even as the better things we now enjoy have come to us from the struggles of former years.

I believe that to live and work on a good farm, or to be engaged in other agricultural pursuits, is pleasant as well as challenging; for I know the joys and discomforts of agricultural life and hold an inborn fondness for those associations which, even in hours of discouragement, I cannot deny.

I believe in leadership from ourselves and respect from others. I believe in my own ability to work efficiently and think clearly, with such knowledge and skill as I can secure, and in the ability of progressive agriculturists to serve our own and the public interest in producing and marketing the product of our toil.

I believe in less dependence on begging and more power in bargaining; in the life abundant and enough honest wealth to help make it so--for others as well as myself; in less need for charity and more of it when needed; in being happy myself and playing square with those whose happiness depends upon me.

I believe that American agriculture can and will hold true to the best traditions of our national life and that I can exert an influence in my home and community which will stand solid for my part in that inspiring task.

-E.M. Tiffany

The creed was written by E.M. Tiffany and adopted at the Third National FFA Convention. It was revised at the 38th and 63rd Conventions.

FFA Motto

Learning to Do, Doing to Learn

Earning to Live, Living to Serve

Colors

As the **blue** field of our nation's flag and the **golden** fields of ripened corn unify our country, the FFA colors of **national blue** and **corn gold** give unity to the organization. All FFA functions and paraphernalia should proudly display the colors.

FFA Emblem

The cross section of the **ear of corn** provides the foundation of the emblem, just as corn has historically served as the foundation crop of American agriculture. It is also a symbol of unity, as corn is grown in every state of the nation.

The **rising sun** signifies progress and holds a promise that tomorrow will bring a new day glowing with opportunity.

The **plow** signifies labor and tillage of the soil, the backbone of agriculture and the historic foundation of our country's strength.

The **eagle** is a national symbol which serves as a reminder of our freedom and ability to explore new horizons for the future of agriculture.

The **owl**, long recognized for its wisdom, symbolizes the knowledge required to be successful in the industry of agriculture.

The words "**Agricultural Education**" and "**FFA**" are emblazoned in the center to signify the combination of learning and leadership necessary for progressive agriculture.



Program Completers

Sash Requirements:

- 4 years in an agriculture course
- 4 years with an SAE project/work experienced
- 4 completed record books
- Has earned a state degree
- Been on at least one competitive team

Medallion Requirements:

- 3 years in an agriculture course
- 3 years with an SAE project/work experience
- 3 completed record books
- Been on at least one competitive team

Official Dress



Female Official Dress

- Black skirt.
- *Skirt is to be at least knee length, hemmed evenly across the bottom, with a slit no longer than 2 inches above the knee, excluding the kick pleat. Black slacks may be appropriate for traveling and outdoor activities.*
- White collared blouse and official FFA blue scarf.
- Black dress shoes with a closed heel and toe (No boots, sandals, open-toed shoes, or tennis shoes.)
- Black nylon hosiery (For California, NUDE nylons are worn.)
- Official FFA jacket zipped to the top.

Male Official Dress

- Black dress pants. (No jeans - blue or black, leather, pleather, etc.)
- White dress shirt and official FFA tie
- Black dress shoes with a closed heel and toe. (No boots, sandals, open-toed shoes, tennis shoes.)
- Black socks.
- Official FFA jacket zipped to the top.

Fair Uniform

Official Show Uniform

- Official FFA Jacket zipped to the top.
- White collared blouse or shirt
- FFA Tie or Scarf
- White pants
- Shoes should be appropriate for what is being shown. (Ex. Boots)



FFA Jacket Pins

All chapter degree, officer and award medals should be worn beneath the name on the right side of the jacket, with the exception of a single State FFA Degree charm or American FFA Degree key. These should be worn above the name or attached to a standard degree chain. **No more than three medals should be worn on the jacket. These should represent 1) the highest degree earned, 2) the highest office held and 3) the highest award earned by the member.**

Degree Ladder

Greenhand Degree

- Be regularly enrolled in a vocational education course for an agricultural occupation and have satisfactory and acceptable plans for a program of supervised agricultural experience.
- Learn and explain the FFA Creed, Motto, Salute, and the FFA Mission Statement.
- Describe the FFA emblem, colors, and symbols.
- Explain the proper use of the FFA jacket.
- Have satisfactory knowledge of the history of the organization.
- Know the duties and responsibilities of FFA members.
- Personally own or have access to the Official FFA Manual.
- Submit written application for the degree for chapter records.

Chapter Degree

- Completed one year of agriculture education
- Be familiar with the state association and national organization.
- Be familiar with constitution of the local chapter.
- Be familiar with Parliamentary Procedure.
- Must have led a group discussion for fifteen minutes.
- Must have earned at least \$150 in their SAe project
- 2.0 scholastic record in an agricultural course.
- Participate in two community service activities

American Degree

- Earned State Degree
- 3 years in Agriculture education, one year in postsecondary education
- Earned \$10,000 and invested \$7,500
- Have 2.0 GPA in High School and Postsecondary
- 50 hours community service, 3 different events

State Degree

- Must have Chapter FFA Degree for at least one year
- Have been an active member for least two years
- Two years of agriculture education
- Have worked for a minimum of 500 hours, and deposited in a bank or otherwise productively invested at least \$1,000.00; or show an investment cost of at least \$2,000.00 in depreciable property inventory; or have earned
- Perform ten procedures of parliamentary law
- Give a six-minute speech OR lead a group discussion for forty-minutes
- Serve as an officer, committee chairperson, or participating member of a committee
- Participate in at least five distinctly different FFA activities at the chapter level
- Participate in at least two distinctly different non-FFA school activities
- Participate in activities for community improvement at least two distinctly different activities, for a total of 25 hours

Proficiency Areas

The Agricultural Proficiency Awards honor FFA members who, through their SAEs, have developed specialized skills that they can apply toward their future careers. Students can compete for awards in 53 areas covering everything from Agricultural Communications to Wildlife Management. Each award area has two categories, placement and entrepreneurship.

Agricultural Communications – Entrepreneurship/Placement
Agricultural Education – Entrepreneurship/Placement
Agricultural Mechanics Design and Fabrication – Entrepreneurship/Placement
Agricultural Mechanics Repair and Maintenance – Entrepreneurship
Agricultural Mechanics Repair and Maintenance – Placement
Agricultural Processing – Entrepreneurship/Placement
Agricultural Sales – Entrepreneurship
Agricultural Sales – Placement
Agricultural Services – Entrepreneurship/Placement
Agriscience Research – Animal Systems
Agriscience Research – Integrated Systems
Agriscience Research – Plant Systems
Beef Production – Entrepreneurship
Beef Production – Placement
Dairy Production – Entrepreneurship
Dairy Production – Placement Diversified
Agricultural Production – Entrepreneurship/Placement
Diversified Crop Production – Entrepreneurship
Diversified Crop Production – Placement
Diversified Horticulture – Entrepreneurship/Placement
Diversified Livestock Production – Entrepreneurship/Placement
Environmental Science and Natural Resources – Entrepreneurship/Placement
Equine Science – Entrepreneurship
Equine Science – Placement
Fiber and/or Oil Crop Production – Entrepreneurship/Placement
Food Science and Technology – Entrepreneurship/Placement
Forage Production – Entrepreneurship/Placement
Forest Management and Products – Entrepreneurship/Placement
Fruit Production – Entrepreneurship/Placement
Goat Production – Entrepreneurship/Placement

Grain Production – Entrepreneurship
Grain Production – Placement
Home and/or Community Development Landscape Management – Entrepreneurship/Placement
Nursery Operations – Entrepreneurship/Placement
Outdoor Recreation – Entrepreneurship/Placement
Poultry Production – Entrepreneurship/Placement
Sheep Production – Entrepreneurship/Placement
Small Animal Production and Care – Entrepreneurship/Placement
Specialty Animal Production – Entrepreneurship/Placement
Specialty Crop Production – Entrepreneurship/Placement
Swine Production – Entrepreneurship
Swine Production – Placement
Turf Grass Management – Entrepreneurship/Placement
Vegetable Production – Entrepreneurship/Placement
Veterinary Science – Entrepreneurship/Placement
Wildlife Production and Management – Entrepreneurship/Placement

FFA Participation

FFA is an INTRA-curricular activity - not extracurricular like football, Spanish club, drama, or speech. This means that it is a part of the class you are taking. This expectation is similar to what is expected of students enrolled in vocal or instrumental music classes --participation in performances is required and is a part of the students' grades. The difference is that in Ag Ed classes you aren't required to participate in all activities, just certain activities which are assigned. Therefore, your participation in FFA will never reduce your grade. We believe that students who take advantage of more FFA events and activities will benefit all around in their educational experience and leadership skills.

Eligibility for FFA Membership

FFA membership is limited to students who are enrolled in Agricultural Education courses and certain graduates. Because FFA is an intra-curricular activity (not extra-curricular) it is considered part of a class. If a student wants to join FFA, they must enroll in at least one Ag Ed class during the school year (this can include the Summer SAE Session.). The "FFA Year" begins on the last day of your eighth grade school year and ends on the last day of summer vacation. Therefore, a student

enrolled in any Ag Ed class for the 2017 - 2018 school year (regardless of which semester), or summer 2018 SAE, is eligible for FFA membership beginning on the first day of school (August 28, 2017) and lasting throughout the entire school year and the following summer of 2018. Fifth year membership is given to those students with exceptional SAE projects, that have earned their State Degree and wish to obtain their American Degree. This occurs during your first year of postsecondary schooling. Applications are submitted in late April.

Chapter Communication



This is our main method of communication. The advisor sends out one or two text reminders per week with information about upcoming events. It is a great reminder tool for busy FFA members as well as busy parents to keep up with opportunities available to their kids at school.

Text the number: 81010, @ghffa



Facebook and Instagram is where you can find information about upcoming events and successes of our students. We post information and results weekly depending in the month.

Facebook:

FFA Chapter-

[facebook.com/GHFFA](https://www.facebook.com/GHFFA)

Gridley FFA Floral-

[facebook.com/GridleyFloral](https://www.facebook.com/GridleyFloral)

Instagram:

@gridleyffa AND @gridleyfloral



We have a Google calendar that we run all our FFA events through. We share this calendar with all of our students and parents as well. If interested please email Mr. Reed.

Also you can visit our website for more information and updates.

<http://gridleyffa.wixsite.com/gridleyffa>

CONFERENCES & CONVENTIONS

Greenhand Leadership Conference

Introduces students to the benefits and opportunities in Agricultural Education, including SAE and FFA. This conference is the “hook-line-and-sinker” to get students to buy into Agricultural Education throughout their four years in high school.



Made for Excellence

Personal development starts with the individual. Self-discovery of talents, strengths, interests and personal character are emphasized as the individual is channeled to discover their passion in life. This conference focuses on “Student Development and ME: one's personal skills and development of the ability to be successful.”



Advanced Leadership Academy

Once a leader is comfortable with their own self and self-purpose, they can discover how to work with others and establish a goal. The process for analyzing program needs and planning a project or event is the focus of this conference as students discover how to be teams of innovative leaders in their chapter. This conference about "WE: the individual leader, their relationships with others and how to



establish common vision."

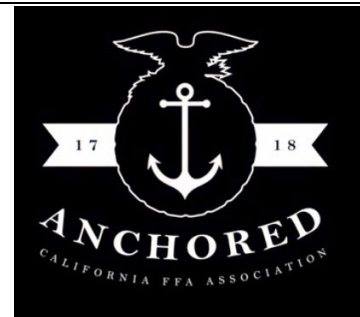
Sacramento Leadership Experience

Students step into the role of one of California's State legislators, are assigned a specific California district and spend four days in Sacramento. SLE is all about the role of government, agricultural policy and advocacy. This conference focuses on Community Development and DO: the ability of the individual leader and team to put their vision into action."



California State Convention

For All Members; Four Day Event, 1 Convention held in April. Over 7,000 high school students, advisors and guests attend the largest annual conference Fresno hosts -- the California FFA State Leadership Conference at the Anaheim Convention Center. The four-day conference attracts young agricultural leaders from over 300 chapters of California FFA. The Convention encourages students to develop personal and team leadership skills, discover agricultural careers, establish lasting friendships and strive for success. The Convention also will highlight student accomplishments in public speaking and production practices with proficiency awards, scholarships and special recognitions.



National FFA Convention

For All Members; Four Day Event, 1 Convention held in October. More than 60,000 attend the annual National FFA Convention & Expo, including students, teachers, school administrators, former FFA members and guests from throughout the country. The event is the nation's largest annual gathering of students.

Students have the opportunity to explore career and educational opportunities from more than 450 industry-leading exhibitors at the Expo and participate in hundreds of education workshops and tours. While in Indiana, FFA members and other supporters from around the country will learn about careers in agriculture, compete for scholarships and awards, meet with industry leaders, volunteer in the



Indianapolis community and learn skills they can take back to their home FFA chapter.

California State Officers



President-Luke O'Leary
San Luis Obispo

Vice President-Jasmine Flores
Atwater

Secretary-Genevieve Regli
Ferndale

Treasurer-Armando Nevarez
Holtville

Reporter-Hunter Andrade
Tracy

Sentinel-Bobby Marchy
Turlock

Superior Region Officer Team



President-
Melinda Lowe
Orland

Secretary-
Olivia Hanna
Etna

Sierra Buttes VP-
Lidia Segoviano
Yuba City

North Valley VP-
Crystal Medina
Pierce

Intermountain VP-
Reagan Dahle
Big Valley

Shasta VP-
Mason Justice
Etna

Treasurer-
Nolan Britten
Durham

Reporter-
Lauren Walker
Foothill

Sentinel-
Russell Raschein
West Valley

Historian-
Amalia Nava
L.os Molinos

Chapter Officers



President-Dylan Terry

Vice President-Max Nicolson

Secretary-Lauren Kelly

Treasurer-Zane Young

Reporter-Maddy Hamman

Sentinel-Malia Montero

FFA Statistics

FFA MEMBERSHIP

649,355 Student members
7,859 Local FFA chapters in the U.S., Puerto Rico and U.S. Virgin Islands
225,891 Alumni members
1,934 Alumni chapters

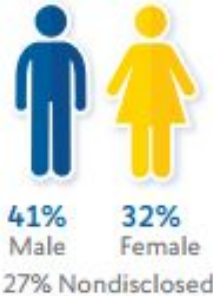
TOP 6 U.S. STATES

with largest FFA membership

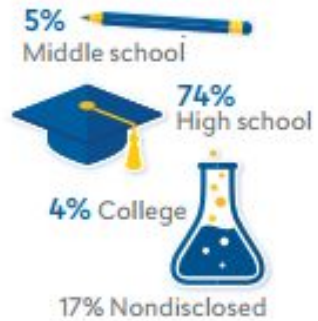


115,630 Texas **27,205** Oklahoma
83,917 California **25,806** Ohio
40,881 Georgia **25,784** Missouri

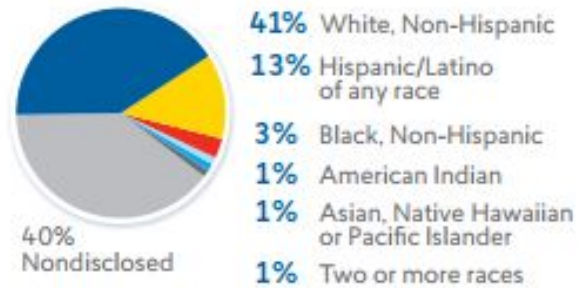
GENDER*



GRADE LEVEL*



RACE AND ETHNICITY*



FFA members earn \$4 billion annually through hands-on work experiences and participate in and learn advanced career skills

in 47 national proficiency areas that range from food science and technology to wildlife management and production agriculture.



Through 25 national career development events, FFA members are challenged by real-life, hands-on skill tests, preparing them for career success.

*Based on reported data

Officer Responsibilities

President:

- Attend and preside over all chapter meetings (monthly)
- Attend all officer meetings (twice per month)
- Compete in Career Development Events
- Compete in Speaking Contest Events (Section Level)
- Complete STAR Adult Award Application(s)
- Assist in proofreading Proficiency Applications
- Attend all Ag. Advisory meetings
- Sign all purchase orders prepared by the Advisors or Treasurer
- Oversee sign-up and recruit members to take part in activities
- Serve on all committees

Vice President:

- Attend all chapter meetings (monthly)
- Attend all officer meetings (twice per month)
- Compete in Career Development Events
- Compete in Speaking Contest Events (Section Level)
- Attend all committee meetings
- Maintain Point Awards Chart
- Keep electronic points chart
- Post a digital Point Awards Chart on Website and student access pages
- Assist in proofreading Proficiency Applications
- Assist President in overseeing sign-up and recruit members to take part in activities
- Complete Secretary, Treasurer, and Reporter responsibilities if not completed by officers in a timely manner
- Maintain list of donors (time, supplies, monetary) that have given to the chapter over the past year

Secretary:

- Attend all chapter meetings (monthly)
- Attend all officer meetings (twice per month)
- Compete in Career Development Events

- Compete in Speaking Contest Events
- Take minutes at meetings, have minutes wrote and in Google Drive “Officer” folder two days following meeting
- Take or collect minutes at committee meetings, have minutes wrote and in secretary binder two days following meeting
- Maintain Secretary Book (Drive Folder) with a copy of the agenda, minutes
- Write and print Banquet script, program, and certificates
- Take or Assign attendance at all events
- Write thank you’s on behalf of the chapter
- Prepare meeting agendas at least 2 school days prior to the meeting.
- Post agenda on FFA Website at least 2 days prior to the meeting
- Post applications on FFA Website at least one month prior to due dates

Treasurer:

- Attend all chapter meetings (monthly)
- Attend all officer meetings (twice per month)
- Compete in Career Development Events
- Compete in Speaking Contest Events
- Present treasurer's report at chapter meetings (debits, credits, and balance)
- Keep chapter financial records book neat and orderly
- Sit on the Fundraiser committee(s)
- Prepare PO Forms for checks to be issued, have them signed by Advisor and President, give them to Mr. Reed
- Attend all large fundraising events (Drive-Thru BBQ, Rib Feed, National Convention Dinner, etc. to take and manage money)

Reporter:

- Attend all chapter meetings (monthly)
- Attend all officer meetings (twice per month)
- Compete in Career Development Events
- Compete in Speaking Events
- Complete STAR Reporter Application
- Complete Web Development Award
- Take photographs at all events or have someone selected as photographer
- Write news article after all contests and community service events. Must be done within two days of event. Send to paper and radio station once proofed by advisor.

- Publish newsletter quarterly (September, December, March, June). Distribute to local business and prepare mailings for chapter members and boosters.
- Write the bi-monthly new article for Farm Bureau Newspaper
- Post pictures on FFA Website or work with Website Coordinator to get images published

Sentinel:

- Attend all chapter meetings (monthly)
- Attend all officer meetings (twice per month)
- Compete in Career Development Events
- Compete in Speaking Contest Events
- Be at chapter meeting 45 minutes early to set-up room
- Post Meeting Reminder posters 2 school days prior to meeting
- Oversee degree ceremonies (including collection of applications)
- Plan and oversee monthly after school chapter activities

By signing below I understand that the above is the responsibility of me as an officer. I understand that a copy of this document is posted on the Gridley FFA website for reference. I understand that by me not performing my duties listed above that I may be removed from my office at any point during the year.

Officer: _____ Date: _____

Office held 2017-2018 year:

By signing below I understand that the above is the responsibility of my student as an officer. I understand that a copy of this document is posted on the Gridley FFA website for reference. I understand that by my student not performing his or her duties listed above that he or she may be removed from office at any point during the year.

Parent: _____ **Date** _____

Parliamentary Procedures

Parliamentary Procedure

Commuting Students Association Meetings

What are Robert's Rules of Order?



Robert's Rules of Order are a set of guidelines on how to conduct a meeting. It is an organized way to conduct business, make decisions, and solve problems.



THE CHAIR

is the person conducting the meeting. On CSA, the chair is usually the Executive President, unless she/he passes the chair to someone else. The chair is neutral in debate, and only votes to break or force a tie.



THE AGENDA

is like the "to-do" list for the meeting. The standard order of business is:

- Call to Order
- Attendance
- Public Agenda
- Executive Reports
- Class Board Reports
- Liaison Reports
- Advisor Reports
- Open Floor
- Adjournment

E-mail agenda points to the Chair before the meeting (24 hrs in advance, please).



OPEN FLOOR

is a great time to bring up anything that wasn't on the agenda. This is also a time when you can make announcements.



EXECUTIVE SESSION

takes place when someone would like to talk about something private to the group. All non-CSA members must leave.

The Basics

Decision Making



If there are no more contributions For or Against the motion the Chair will conduct a vote for the motion!

If someone wants to end debate they can "Call for the Previous Question". This means everyone Votes on whether or not they want to end debate. If the vote fails, debate continues, if the vote passes, the group will then vote on the motion.



Other Options



AMEND

Want to change or add to the motion? "I move to amend the motion on the table to read..." The group then has the ability to debate and vote on the amendment.



TABLE

Want to discuss this matter at another time? "I move to table this discussion until..." You can move to discuss the topic later in the agenda or at the next meeting.



ADOPT

Did someone create a document that you wish to approve? "I motion to adopt..." This could refer to resolutions, the Constitution, or bylaws.



Reconsider

Do you think you made a mistake after a vote has taken place. If you were on the winning side, you can say "I move to reconsider..." anyone can second the motion.



Rescind

Maybe after the meeting you talk with other members and think the group didn't have enough information. At the next meeting you can say "I move to rescind..."

Career Development Event (CDE) Teams and Contests

Public Speaking Contests:

A majority of these contests take place at local and sectional levels. Some students may compete in FFA Field Days as well.

Creed Speaking (Freshman Only):

-Freshman in Gridley FFA will learn in the FFA Creed written by E.M. Tiffany and recite the creed and answer agricultural based questions after recitation. Opportunities with creed speaking allow students to compete at local, state and national levels. Students will learn the FFA Creed in their Introduction to Agriculture Course.

Extemporaneous Speaking:

-Students who choose to compete in Extemporaneous Speaking Contests will be participants who are given 30 minutes to deliver a speech on one of three assigned agricultural topics. Students must learn to think on their feet and develop an argument quickly and persuasively.

Impromptu Speaking:

-Students who choose to compete in Impromptu Speaking Contests will be asked to talk to judges on the spot about various agricultural aspects of Ag Education and FFA. There will be two rounds of speaking. One round will contain topics in the form of questions that students could potentially encounter from administrators, peers, teachers, news media, or the general public with regards to the FFA Program or the Agriculture Industry. Referred to as the "Questions" Round. The other round will contain topics derived from keywords or quotes relating to leadership and the Agriculture Industry. Referred to as the "Keywords/Quotes" Round.

Job Interview Contest:

-Students who choose to participate in the Job Interview Contest will pick a career in Agriculture and upon arrival to the contest fill out a job application, bring their resume and cover letter and engage in a job interview. This contest gives real-world experience and benefits many students confidence and public speaking skills.

Opening/Closing Contest:

-Students who choose to participate in the Opening/Closing Contest will learn the FFA Opening/Closing ceremonies and choose a position (ie. President, Vice President, etc.) and will deliver the opening/closing ceremonies on their team of 6. Students participating in this contest will try out at the local chapter level (Gridley High School) and if selected asked to move on to

the North Valley Sectional Contest in Colusa. This contest ends at the Sectional Level. Students will learn Opening/Closing in class.

Prepared Speaking:

-During the Prepared Public Speaking CDE, students write and deliver a six- to eight-minute speech about a current agriculture-related topic. The speaking skills gained through this event help students excel in school, community and career.

FFA Field Day Contest Teams:

Students who participate on these teams will be asked to attend all FFA Field Day Contests in the Spring that hosts each of their contests. We ask that students remain committed as a team can NOT compete if it is missing one of its competitors.

Agricultural Sales Team:

-In the Agricultural Sales CDE, students demonstrate skills in customer relations, advertising and promotion and merchandise displays. Students will compete in teams of 4 and sell an agricultural product determined by the California State FFA. Students will participate in one on one sales activities, group sales and demonstrate knowledge of the agricultural product.

Best Informed Greenhand (Freshman Only):

-The Gridley FFA Best Informed Greenhand Team is an individual based test taking contest that freshman students take. The questions are about Agriculture Education and FFA. Students will be given the FFA handbook to study from and asked to attend practices. This contest does not require speaking but will tests a student's overall FFA knowledge!

Floral Judging:

-The Gridley FFA Floral Judging Team will be comprised of 4-6 members with 4 students competing in a contest at a time. The Floriculture CDE requires students to identify plants, judge flower arrangements and solve problems. Participants also demonstrate skills in flower arranging, propagation and the preparation of floral and foliage products for sale.

Fruit Tree Judging:

-The Gridley FFA Fruit Tree judging team is comprised of 4-6 members (4 will count in a contest). The Fruit Tree Judging event seeks to effectively prepare the students to learn current agriculture pomology practices and procedures used in today's industry. Workers seeking careers in agriculture must not only develop a high degree of knowledge and skill, they must also develop the ability to solve difficult problems. This event blends the testing of manipulative skills and knowledge required for careers in agriculture production.

Light Horse Judging:

-In the Horse Evaluation CDE, students evaluate and rank horses based on breed characteristics, conformation and performance. As a team, students cooperatively solve problems related to equine selection, management, nutrition and production. A team may consist of three or four members. The top three scores will be used to determine the official team. If a school only has three members, they are the official team. These same three individuals will be used in selecting sub-contest, team winners. All contestants may compete for individual awards.

Livestock Judging:

-The Gridley FFA Livestock judging team is comprised of 4-6 members (4 will count in contest). Students who participate in the contest will be able:

- To understand and to interpret the value of performance data based on industry standards.
- To measure the student's knowledge in the following categories:
- To make accurate observations of livestock
- To determine the desirable traits in animals
- To make logical decisions based on these observations
- To discuss and to defend their decisions for their placing
- To instill an appreciation for desirable selection, management and marketing techniques
- To develop the ability to select and market livestock that will satisfy consumer demands and provide increased economic returns to producers. Provide positive economic returns to producers as well as meet the needs of the industry.
- To become proficient in communicating in the terminology of the industry and the consumer.
- To provide an opportunity for participants to become acquainted

Small Engines:

-The purpose of the contest is to stimulate an appreciation for small engine repair and serve as one method of training Future Farmers in the skills and safety practices needed in diagnosing engine malfunctions. Schools will be required to bring a prescribed list of tools. There will be a critique following the contest.

Welding Team:

-Advanced Agriculture welding is for students who excel in the field and compete in 7 different welding processes, cutting, and their general knowledge against students from other schools. Resumes and job applications are also taught in this competitive CDE.

Program of Activities

The Gridley FFA Program of Activities is a tentative schedule of activities for the school year based on previous year events and newly planned events.

Month:	Date:	Event:
August	21-25	Butte County Fair
September	10	Chapter Meeting
September	12	Chapter Activity
September	25	GLC
September	28-29	Fall Classic Judging Contest (Medford, OR)
October	4	Beef & Range Day
October	10	Chapter Activity
October	13	Cow Palace Livestock Contest
October	11	Shasta Field Day
October	22	Chapter Meeting
October	24-28	National Convention-Indianapolis
November	7	Drive Thru BBQ
November	10	Lassen College Field Day
November	14	Local Opening/ Closing Contest
November	15	Parent/Exhibitor Livestock Meeting
November	17	UC Davis Livestock Contest
November	17	Los Molinos Speaking Contest
November	18	Cattle Contest Livestock Judging
November	26	Chapter Meeting/Canned Food Drive
December	10	Chapter Meeting
December	15	Xmas from the Heart
December	TBD	Forklift Training
December	7	FFA Welding Field Day in Gridley
January	11-12	MFE/ALA
January	16	Chapter Activity
January	TBD	Butte Weld Academy
January	23	State Degree Scoring

January	28	Chapter Meeting
February	1	Proficiency Scoring
February	2	Arbuckle FD
February	6	Colusa Farm Show
February	13	NV Section Speaking Contest
February	19-23	FFA Week
February	20	Chapter Activity
February	21	Tractor Day/Teacher Appreciation Breakfast
February	22	County Line Cook Off
February	25	Chapter Meeting
March	2	UC Davis FD
March	9	Chico FD
March	13	Chapter Activity
March	13-14	Yuba Weld Academy
March	16	Rib Feed
March	20	Regional Speaking Competition
March	21	Superior Regional Meeting
March	21	State Degree Ceremony
March	22-23	MJC FD
March	25	Chapter Meeting
March	30	Gridley Field Day
March	TBD	Project Competition
April	6	Cosumnes River College Field Day
April	6	Gridley Plant Sale
April	9	Ag Day
April	10	Chapter Activity
April	11	Weld Olympics
April	12-13	Fresno FD
April	22	Chapter Meeting
April	25-28	State Conference
May	2-5	Cal Poly State Finals

Gridley FFA Constitution

Chapter 75

Article I: NAME AND PURPOSE OF THE ORGANIZATION

Section A. The name of this organization shall be the Gridley Chapter of the Future Farmers of America.

Section B. The primary aim of the Gridley Chapter is the development of agricultural leadership, knowledge, cooperation, and citizenship.

Section C. The Chapter shall cooperate with local educational governing agencies and teachers of agriculture in accomplishing these aims and purposes which the governing body has determined to be appropriate within the framework of the Constitution and Chapter of the National Organization.

1. To build the confidence of students in themselves and their work by developing desirable work habits and the effective use of their time by learning to assume responsibilities.

2. To foster programs and activities which develop leadership, character, scholarship and occupational pride, training for useful citizenship, patriotism, thrift, and improvement in community life by encouraging members to improve the home and its surroundings.

3. To recognize individual achievement in scholarship and occupational experience programs and other individual achievements by providing awards to deserving members.

Section D. The advisor of local chapter must be a qualified vocational agriculture teacher currently teaching reimbursable vocational agriculture in the school.

Article II. MEMBERSHIP

Section A. Type membership in this organization shall be four kinds (1) Active, (2) Alumni Membership, (3) Collegiate, and (4) Honorary. Honorary membership shall be limited to the Honorary Chapter Farmer Degree in the local chapter.

Section B. Active membership: Students who are regularly enrolled in all day or day-unit classes in vocational agriculture are considered active members of the FFA chapter in the school in which they are enrolled, upon payment of state dues by the high school agriculture program. To retain active membership in a vocational agriculture course or must have completed vocational agriculture courses offered at the school. Members may retain active membership until November 30 following the National FFA convention and their high school graduation.

Members still in high school, transferring to a local chapter in California from one state of the United States and/or territories, who present satisfactory evidence of their good standings in that state shall be accredited as members in good standing in the California Association.

Section C. Alumni Membership: Membership shall be open to former active FFA and NFA members, collegiate or honorary FFA and NFA members, present and former professional vocational agricultural educators, parent of FFA members, and others interested in and supporting FFA.

Section D. Collegiate Membership: This may include all trainees preparing to teach vocational agriculture and former professional vocational agricultural educators, parents of FFA members, and others interested in and supporting the FFA.

Section E. Honorary Membership: Supervisors, school superintendents, principals, members of boards of education, instructors, teachers of agriculture, businessmen, farmers, and other supporters who are helping us to advance vocational agriculture and the FFA, and who have rendered outstanding service, may be elected to honorary membership by a majority vote of the members present at any regular meetings or conference. Honorary membership will be limited to the Honorary Chapter Farmer Degree in the local chapter.

Article III. ACTIVE MEMBERSHIP DEGREES AND PRIVILEGES

Section A There shall be four degrees of active membership based upon achievement. They are (1) Greenhand, (2) Chapter Farmer, (3) State Farmer, and (4) American Farmer. The National Organization shall set minimum qualifications for the degrees.

Section B. Greenhand Degree: On the meeting following qualifications, the Greenhand Degree may be conferred by the Chapter.

1. Be regularly involved in an educational course for an agricultural occupation and have satisfactory plans for a program of supervised occupation educational experience.
2. Learn and explain the FFA Creed, Motto, and salute.
3. Describe the FFA emblem, colors, and symbols.
4. Explain the proper use of the FFA jacket.
5. Have satisfactory knowledge of the history of the organization.
6. Know the duties and responsibilities of FFA members.
7. Personally own or have access to the Official FFA Manual.

8. Submit written application for the degree for chapter records.

Section C. Chapter FFA Degree: On the meeting following minimum qualifications the Chapter Farmer Degree may be conferred by the Chapter.

1. Must have the Greenhand Degree and have records of satisfactory participation in the activities of the local Chapter.

2. Must have satisfactorily completed at least one year of instruction in vocational agricultural, have in operation an approved supervised farming and/or other agriculture class.

3. Be familiar with the purpose and programs of activities of the State Association and National Organization.

4. Be familiar with the provisions of the constitution of the local chapter.

5. Be familiar with Parliamentary Procedure.

6. Be able to lead a group discussion for 15 minutes.

7. Must have earned at least \$150 by his/her own efforts from their supervised agricultural occupation educational program, and have it productively invested or deposited in the bank, have worked 180 hours in their SOEP.

8. Have satisfactory (2.0) scholastic record in agricultural courses.

9. Participate in activities for community improvement as evidenced by participating in at least two distinctly different activities, to the extent of spending at least 10 hours of personal time, which you seek to serve and/or improve the quality of life in the local community

Section D. State FFA Degree: The qualifications for the State Awards shall be set forth in the State FFA Constitutions.

Section E. American FFA Degree: The qualifications for the American FFA Degree shall be those set forth in the National FFA Constitution.

Article V. OFFICERS

Section A. Elected officers shall be elected annually by a majority vote of FFA members. They shall be elected by secret ballot and assume office the following day after the elections that are announced at the Spring Blue & Gold FFA Banquet. Officers of the local chapter shall consist of president, vice president, secretary, treasurer, reporter, sentinel. Other offices may be designated if desirable. All vacancies may be filled by presidential appointment, with executive

committee approval, until the next regular appointment, with executive committee approval, until the next regular election or if a special election is held.

Section B. There shall be an executive committee established by the Gridley FFA Chapter consisting of the officer team, and one or more advisor(s).

Section C. Those that hold an office at the regional level shall not be eligible to be an officer at the local level.

Section D. Sectional Officers are eligible to be an officer at the local level.

Article VI. MEETINGS

Section A. Emblems shall be uniform throughout the association and in recognized units thereof. All members shall be entitled to wear this emblem. All Greenhands are entitled to wear a bronze emblem pin. All chapter FFA degree recipients are entitled to wear a silver emblem pin. All state degree recipients are entitled to wear the gold charm. All members elected to the degree of American Farmer are entitled to wear the gold emblem key.

Section B. Local chapter may make local awards to their members irrespective of degrees held. The local chapter should adopt its own scorecard for determining the selection of members to receive awards.

Section C. The official FFA show uniforms shall be worn by all FFA exhibitors and by helpers in individual and group classes while showing at fairs and livestock shows. If the rules state FFA dress you shall wear the following or you must wear what the rules state or your own choices if the rules don't state clothing guidelines. The uniform shall consist of white pants, white collared dress shirt (short or long sleeved), with official FFA necktie for boys and official FFA scarf for females. Hats are not to be worn with the official show uniform at anytime.

Section D. The official FFA dress for boys shall be the FFA jacket, zipped to the top, worn with a white collared shirt, official FFA neck tie, black slacks, black socks, black belt, and black dress shoes or boots. The Official FFA dress for girls shall consist of the Official FFA jacket, zipped to the top, Official FFA scarf, white collared dress shirt, knee length black skirt (appropriate slit is okay), nude women nylons, black closed toed shoes.

Section E. Parliamentary Procedure in all meetings of this organization shall be in accordance with Robert's Rules of Order.

Gridley FFA By-Laws

Chapter 75

Article 1. Requirements for showing

Any member of the Gridley FFA who wishes to participate in exhibiting livestock at local, regional, or state livestock shows must fulfill the following requirements:

Section A. First year exhibitor-Any member who has never exhibited livestock under the Gridley FFA Chapter.

1. Students that have graduated from the eighth grade and are enrolled in an Ag. Class (shop or science) are eligible to show at the Butte County Fair. Students must be enrolled in an agriculture class to exhibit with Gridley FFA.
2. Must maintain a "C" average in school, no "D's or F's" in any of their agriculture courses.
3. A member cannot miss three (3) FFA meetings and still exhibit livestock (Only pre-approved excuses by the executive committee will be allowed).
4. Members must also keep an accurate, up to date record book and turned in on date specified by agriculture instructors
5. Members will participate in the Gridley FFA Rib Feed.
6. All other school rules including the disciplinary policy must be followed.

Section B. 2nd through 4th year exhibitors

1. Must maintain a "C" average in school, no "D's or F's" in their agriculture courses.
2. A member cannot miss three (3) FFA meetings and still exhibit livestock (Only pre-approved excuses by the executive committee will be allowed).
3. Member must keep and accurate, up to date record book and have it turned in on date specified by agriculture instructor.
4. Members will participate in the Gridley FFA Rib Feed.

5. All students in high school that exhibit at the Butte County Fair must be enrolled in an agriculture class that following year.
6. All other school rules including the disciplinary policy must be followed.
7. Students must be enrolled in an agriculture class to exhibit with Gridley FFA.

Section C. 5th year or Graduate Exhibitors

1. A member must have been active in exhibiting livestock their senior year to be eligible.
2. All members who would like to show their fifth year out must apply for their American Farmer Degree, and have it submitted by April 15th
3. At anytime an advisor has the right to discontinue a student's eligibility to their 5th year of the FFA and can prevent them from showing at the fair(s).

Section D. Failure to maintain a clean animal and/or pen will result in removal from showing at the next eligible fair in which Gridley FFA competes at.. The FFA advisors will determine infractions.

Article 2. Elections

Section A. Officer Requirements

1. Officers will be elected according to Article V, Section A and Section B of Officer Requirements of the Gridley FFA Constitution.
2. Requirements for holding chapter office are as follows:
 - A. Maintain a "C" average, no "F's" in any high school course.
 - B. The president and vice president must maintain a 2.5 grade point average.
 - C. The terms of office shall be held for one school year, from May to May of elected year of service..
 - D. Must not miss any regularly scheduled FFA Chapter meeting.
 - E. If elected must attend a Chapter Officer Leadership Conference (COLC) during the elected year as well as the Officer Retreat if chapter decides to attend said events.
 - F. If above items are violated a special election will be held to replace the officer in question. (See section Article 5, Section A of local constitution)

- G. Chapter officers must realize they serve as role models for other members. Remember that what they do represents all students from their school. Any inappropriate activities will result in removal from office.

Section B: Officer Election

1. All members are allowed to apply for FFA Office.
2. All members wanting to apply for FFA Office must fill out an official Gridley FFA Officer Application approved by the Executive officer team in office of that year.
3. Officer Applications will be reviewed by the Agriculture Advisors for pre-screening.
4. The slate process will be reviewed by the interview panel comprised of alumni, administration, outgoing senior officers, community members, etc.
5. Officer candidates will participate in a formal official dress interview at Gridley High School. The date will be selected by the Ag Advisors and interview panel. The interviews will take place in the Ag Department with various time slots.
6. The interview panel will slate the candidates based off of their application and interview.
7. The slated candidates for the following years' officer team will be made available the following day.
8. Voting will take place based on executive team decision.

Section C. Delegates

1. Delegates for the section meeting, regional meeting, and State Conventions shall be selected by advisors based on above chapter level activity need.

Article 3. Committees

Section A. Executive Committee

There shall be an executive committee consisting of the President, Vice President, Secretary, Treasurer, Reporter, Sentinel, Historian, and an advisor. The executive committee shall be empowered to perform all business of the chapter between monthly meetings.

Section B. Chapter Relations Committee

The public relations committee consists of 5 members whose responsibilities are to promote the FFA and design projects for the FFA chapter to become involved with in the community. It is also their duty to inform the public about the FFA throughout the year, during FFA week, and promote agriculture awareness.

Section C. Community Service

The community service committee consists of 5 members who are charged with the duties of designing community service activities for the chapter members to become involved with.

Section D. Fundraiser Committee

The fundraiser committee consists of 5 members who are responsible for managing all fundraising events that take place within the program. They will make sure that all members know of current fundraisers and have ideas for new fundraisers to add to the program.

Section E. Recruitment Committee

The Recruitment Committee will consist of 5 members who will aid in all recruitment activities held throughout the year. They will be asked to come up with ideas for recruitment and be able to attend recruitment days. Members will be allowed to miss only one hosted meeting to be eligible to attend recruitment days.

Section F. Ag Day

This committee is designed to oversee all Ag Day and recruitment activities related to the promotion of the Gridley FFA program. The main focus is to manage the Ag Day event. Committee Chairs will select and oversee event success.

Section G. Field Day

This committee is designed to put on and host the Gridley FFA Field Day. The committee chair will oversee all contest and award events related to that day. They will be required to select various sub-committee chairs to assist with this event.

Article 4. Local Awards & Recognition

Section A. Degree Recognition Awards Awards available to chapter members will be determined by the chapter officers. Chapter members will be selected for the following awards.

1. Star Greenhand
2. Star Chapter Farmer
3. Star Chapter State Farmer
4. Blue and Gold Awards

Section B. Program Completers

Sub-Section 1. Sash Requirements:

- 1.a. 4 years in an agriculture course(s)
- 2.b. 4 years with an SAE project
- 3.c. 4 completed record books
- 4.d. Has earned a state degree
- 5.e. Been on at least one competitive team

Sub-Section 2. Medallion Requirements:

- 2.a. 3 years in an agriculture course(s)
- 2.b. 3 years with an SAE project
- 3.c. 3 completed record books

4.d. Been on at least one competitive team

Section C. Chapter Involvement Awards

1. CDE Team Awards
2. Rising Sun Awards
3. Proficiency Awards

Point Awards System

CHAPTER OFFICER					
PRESIDENT	25				
VICE PRESIDENT	20				
SECRETARY	20				
TREASURER	20				
REPORTER	20				
SENTINEL	20				
HISTORIAN	20				
SECTIONAL OFFICER					
APPLICANT	5				
SECTIONAL OFFICER	20				
REGIONAL OFFICER					
APPLICANT	5				
REGIONAL OFFICER	30				
STATE OFFICER					
APPLICANT	10				
STATE OFFICER	60				
CHAPTER ACTIVITIES					
CHAPTER MEETINGS	5				
AFTER SCHOOL ACTIVITIES	5				

COMMITTEE CHAIRMEN					
COMMITTEE CHAIRMEN	30				
DELEGATE					
SECTIONAL MEETING	5				
REGIONAL MEETING	10				
STATE CONVENTION	30				
NATIONAL CONVENTION	60				
PROJECT COMPETITION					
GOLD AWARD	15				
SILVER AWARD	10				
OUTSTANDING PROJECT	30				
FIELD DAYS					
ATTENDANCE (increase +5 every field day attended)	5				
INDIVIDUAL	1	2	3	4	5
	25	20	15	10	5
TEAM	1	2	3		
	20	15	10		
COMPETE AT STATE OR FINALS	40				
OPENING/CLOSING					
Points awarded to second round finalist at North Valley Section Contest	10				
First High Team @ NV Section Contest	15				
11. CO-OP, B.I.G., Novice Record Books (COUNTED LIKE FIELD DAYS)					

12. JOB INTERVIEW-PREPARED SPEECH-CREED-EXTEMPORANEOUS- DISCUSSION MEET					
SECTIONAL LEVEL					
INDIVIDUAL	1	2	3		
	30	25	20		
REGIONAL LEVEL					
INDIVIDUAL	1	2			
	40	35			
STATE LEVEL					
INDIVIDUAL	1	2	3	4	5
	55	50	45	40	35
13. PARLIAMENTARY PROCEDURE CONTEST					
SECTIONAL LEVEL					
TEAM	1	2	3		
	30	25	20		
REGIONAL LEVEL					
TEAM	1	2			
	40	35			
STATE LEVEL					
TEAM	1	2	3	4	5
	55	50	45	40	35
14. COUNTY FAIR					
Champion Market	50				

Res. Champion Market	30				
Champion Breeding	20				
Res. Champion Breeding	15				
Best in Show (Non-livestock)	50				
Runner Up (Non-livestock)	30				
STATE FAIR					
Champion Market	60				
Res. Champion Market	40				
Champion Breeding	40				
Res. Champion Breeding	25				
Best in Show (Non-livestock)	60				
Runner Up (Non-livestock)	40				
SHOWMANSHIP					
All Levels	1	2	3	4	5
	15	10	10	5	5
ROUND ROBIN					
1ST PLACE	50				
OTHER AWARDS					
PREMIER EXHIBITOR-OVERALL	15				
PREMIER EXHIBITOR-BREED	5				
ONLY A MAXIMUM OF 200 POINTS CAN BE EARNED IN THE FAIR & SAE AREAS					

15. SAE PROJECTS	20 pts/ 80 hrs				
<i>All projects indicated in your AET books count towards the listed points above. 20 points for every 80 hours of works from July 1- Third Week of May.</i>					
16. DEGREES *Note degree obtained only in this year (unless state degree has been obtained you can count it again)*					
GREENHAND DEGREE	10				
CHAPTER DEGREE	20				
STATE DEGREE	40				
17. LEADERSHIP CONFERENCES					
GREENHAND CONFERENCE	20				
MADE FOR EXCELLENCE CONFERENCE	20				
ADVANCED LEADERSHIP ACADEMY	20				
SACRAMENTO LEADERSHIP EXPERIENCE	50				
WASHINGTON LEADERSHIP CONF.	50				
STATE CONVENTION	30				
NATIONAL CONVENTION	50				
CHAPTER OFFICER LEADERSHIP CONFERENCE	10				
REGIONAL MEETING	10				
SECTIONAL MEETING	10				
18. PROFICIENCY AWARDS					
LOCAL LEVEL (SELECTED)					
WINNER	5				

SECTIONAL LEVEL					
WINNER	10				
REGIONAL LEVEL					
WINNER	15				
STATE LEVEL					
WINNER	30				

FFA & Ag Related Scholarships

The FFA program and agriculture related businesses and companies offer a wide variety of scholarship options. Below are a list of websites and links that offer scholarships within our programs. Make sure to check the deadlines of scholarships you may be interested in. Some applications cover multiple scholarship and only one application would be required. Begin looking at scholarship options starting junior year. Questions about scholarships please talk to Mr. Reed.

Title/Source	Link/URL
National FFA Collegiate Scholarship Catalog	goo.gl/DojERJ
California FFA Scholarship Site	calaged.org/scholarships
National FFA SAE Grant	goo.gl/WAL6K9